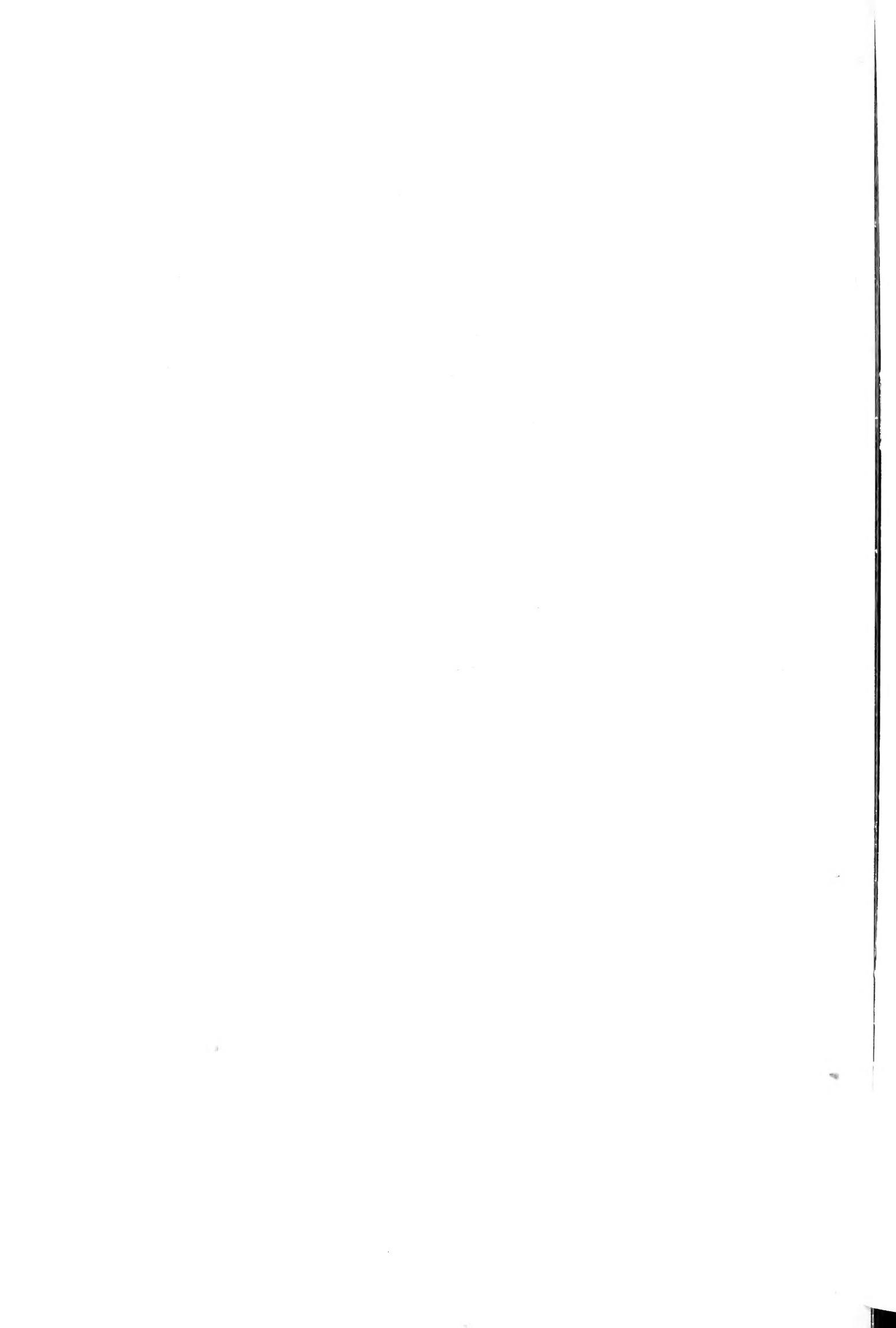


Historic, Archive Document

Do not assume content reflects current scientific knowledge, policies, or practices.



1904

W. W. WILMORE

DAHLIA SPECIALIST

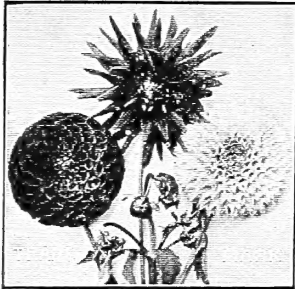


No. 1: INGEBOG EGELAND. No. 2: ARACHNE. No. 3: MRS. M. LESLIE (See pages 3-4.)

ESTABLISHED 1886 P. O. BOX 382 TELEPHONE 2452-2 SPRING OF 1904

DENVER, COLORADO

GARDENS: CORNER WADSWORTH AND WEST THIRTY-EIGHTH AVENUES
ONE AND ONE-HALF MILES WEST OF THE CITY



Friends and Patrons Greeting

It is fitting and proper that in presenting my Catalogue for the new year, I gratefully acknowledge the favors received at the hands of my friends and patrons in the past. By their cordial support I have attained to the position of the largest Dahlia Specialist in the United States. The wonderful progress and improvement made in this popular flower in the past few years has necessitated a rigid weeding out of inferior as well as many heretofore considered good varieties. By this careful attention to business I have kept to the front, and have never failed in taking the first premium of the State. Customers may select from my lists with the assurance that the stock will be the best, and that the varieties will be true to name and color. Each year I originate many new varieties, and carefully note in a book kept for that purpose the habits and qualities of each variety. The stock offered in this Catalogue represents seventeen years of careful study and selection of varieties. To all those who receive this Catalogue, and have never tested my stock, I solicit a trial order, feeling confident that the stock will prove entirely satisfactory.

Yours respectfully,

W. W. WILMORE.

PRICES

I do not claim that my prices are the lowest; nor have I ever coveted the reputation of running a "cheap place." I aim to do an honest business and at the same time retain a profit on my investments. The present evolutionary period of the Dahlia requires the purchasing of new and costly varieties, and the discarding of many hitherto good varieties and consequent loss and waste of stock. Many of the best varieties are shy producers of tubers. Nevertheless, my prices will be found quite reasonable and even lower than others. Special attention of patrons is called to the list of Hardy Herbaceous Plants. They thrive almost anywhere that a weed would grow, requiring only reasonable care the first year to get them well established.

TERMS

UPON WHICH I DO BUSINESS

First—The cash must accompany the order.

Second—Remittances may be sent in any way most convenient to the purchaser, but where remittances are made by P. O. order or registered letter extra stock will be given to recompense for the extra cost.

Third—Prices quoted include postage or express charges to all portions of the United States and Canada when purchased at retail, except where noted.

Fourth—Club Terms: In lots of five dozen or over to one address, those varieties priced at \$1.50 per dozen will be sent for \$1.25; all other stock in proportion.

Fifth—One-half dozen may be ordered at dozen rates. An "Extra" is sent with all orders amounting to 75c or over.

***Sixth—Guarantee:** I guarantee my stock true to name, and of perfect germinating qualities, with the express understanding that should any not prove so, I will replace it with other stock, or refund the money paid, but will not be liable for any damage beyond this.

*Roses, shrubs and vines are not included in the above guarantee.

How to Order

It would be well for each purchaser, when making out an order, to name several varieties as a second choice, for the reason that some of the varieties wanted may be out of stock when the order reaches me.



NOVELTIES AND DAHLIAS of SPECIAL MERIT

No. 1. INGEBORG EGELAND. (See Page 1). This grand Cactus Dahlia I introduced last year and has given satisfaction everywhere. I feel secure in the statement that this Dahlia is easily the first of its color in the Cactus class. The illustration shows a small specimen purposely selected in order to have the group symmetrical. The plant is a strong grower with bright green foliage, presenting a picture of wonderful richness when combined with the large mass of deep scarlet blooms. Flowers are borne well above the foliage on strong, medium length stems.

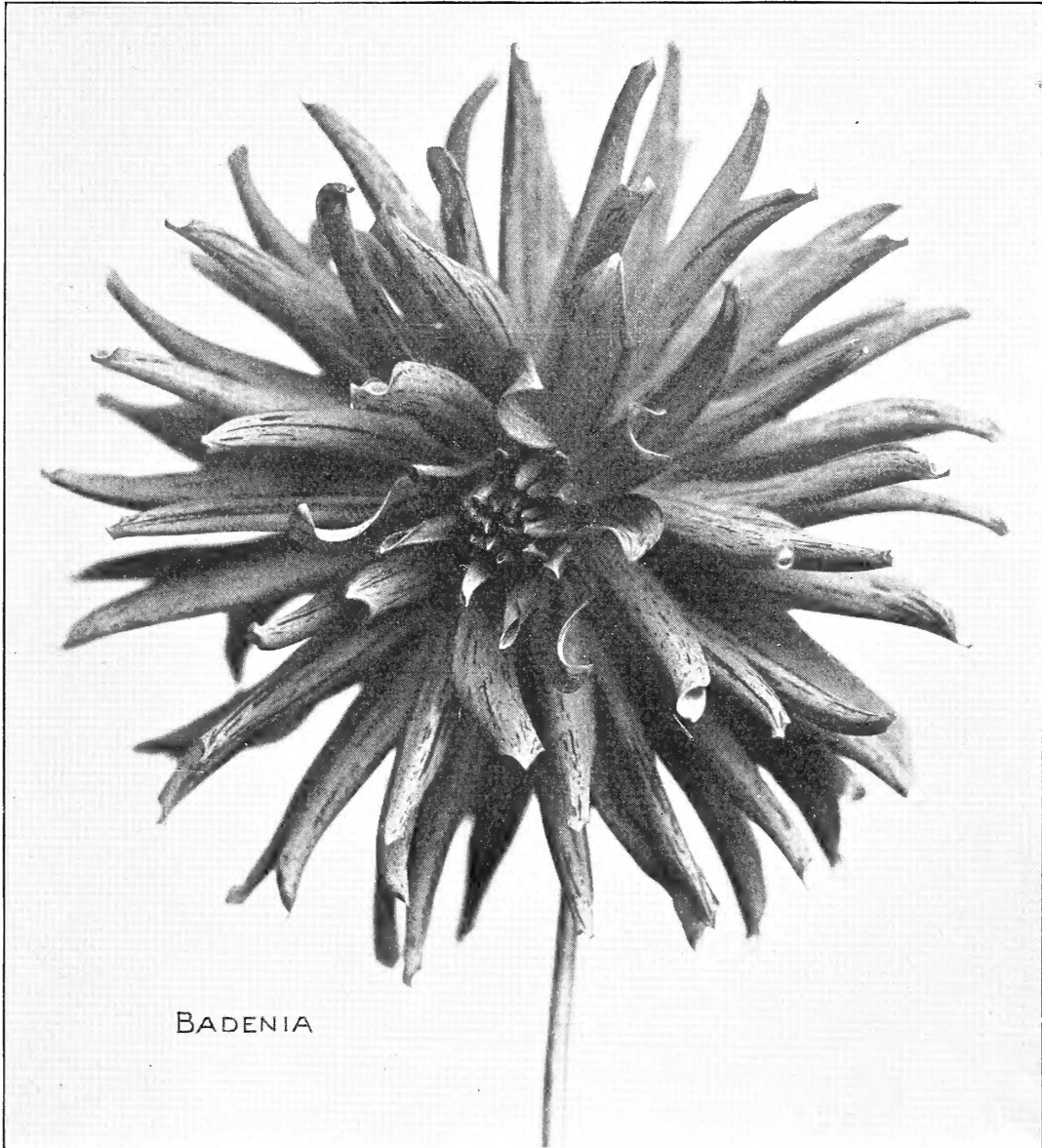
Strong field tubers 75c each; \$7.50 per doz.

No. 2. ARACHNE. (See Page 1.) A most remarkable flower. The center of each petal is pure white edged along its entire length with broad band of brightest crimson. As, however, the edges of the petals are completely reflexed, the white only of the outer petals is seen when looking straight into the face of the flower, sideways the reflexed crimson edges are fully visible, and give the flower a very elegant and coquettish appearance. Strong field roots.

Price, 20c each; \$2.00 per doz.

No. 3. MRS. M. LESLIE. (See Page 1). This new Cactus Dahlia I have had on trial for several years and I now offer it to the public for the first time. In some respects it resembles Ingeborg Egeland, only the plant is of a more spreading habit and the flower a little more compact; flowers are large and of a deep glowing red. Truly a fine Cactus.

Strong field roots. Price 50c each; \$5.00 per dozen.



BADENIA. In this grand Dahlia we have the first really variegated Dahlia in the Cactus section. Color a clear bright orange, striped and flecked with bright red. Petals are very long, and curved towards the center. Flowers are large, and the plant an erect, robust grower. A glance at the illustration will show the form to be a model of perfection.

Price, 25c each; \$2.50 per doz.

CORA GILBERT. A new show Dahlia. In form a perfect model rounded and full with a high center, petals beautifully quilled. Color, creamy pink beautifully shaded. Stems very long. Now offered for the first time.

Strong field roots 50c each; \$5.00 per doz.

MRS. WINTERS, the Grandest of all White Dahlias

Newport R. I., 1901.

"Mrs. Winters was greatly admired and was very free. Blooms 5-6 inches and pure white."

MARY BLUCK.

Colorado City, Colo.

Nov. 23, 1901.

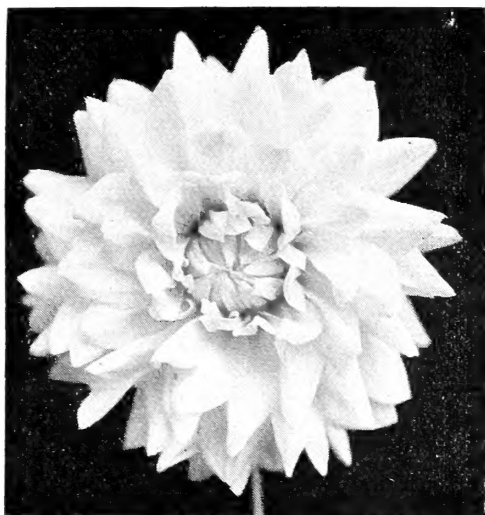
"Mrs. Winters is the best white Dahlia I have seen. It has never shown an open center with me, and the outer petals are always fresh and well preserved."

A. F. BISHOP.

Poughkeepsie, N. Y., 1901.

"Mrs. Winters is a beauty. I have showed it to a number of my friends. All pronounce it a perfect Dahlia."

C. O. BEESMER.



Colorado Springs, Col., '01.

"I consider Mrs. Winters the finest white Dahlia of her class. You cannot recommend her too highly. She is grand beyond description."

C. E. PERRY.

Hillsboro, O., Nov. 1901.

"Your Dahlias all proved to be extra fine, especially Mrs. Winters. Everyone who saw the blooms thought they were immense and perfect in every particular."

MRS. J. A. LEMON.

Denver, Colo., 1901.

"I think the new white Dahlia, Mrs. Winters, is the most beautiful of all Dahlias. Much superior to any other white I have seen."

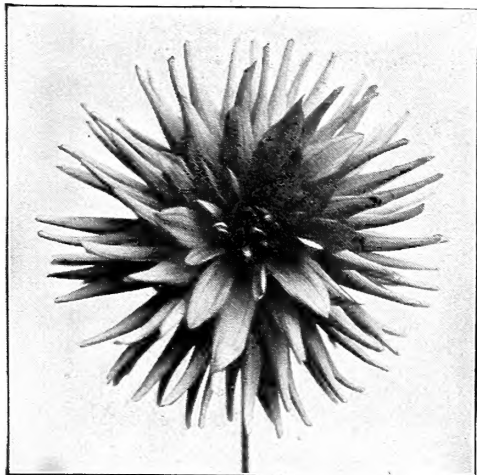
ALICE G. VAN STONE

MRS. WINTERS. (ONE-FOURTH NATURAL SIZE.)

"In offering this Dahlia, I believe I am introducing the best white Dahlia yet produced. The claim is a large one, but I believe its merits will justify the claim. . . . I originated it three years ago, and have watched it carefully, and have yet to see the first imperfect flower. Its color is a pure waxy white, which shows no tint or variation even in the strongest sunlight. It blooms very freely, producing flowers from five to seven inches in diameter, with beautifully pointed petals. . . . Another good quality is that it never shows an open center. The plant grows to a height of 3 feet, and is of a rather spreading habit, and in type belongs to the Cactus section; but the petals, although pointed, are rather broad."

The above are my introductory notes of three years ago. And I find no reason to change or modify the above. It is still the grandest of all white Dahlias.

Price 35c each; \$3.50 per doz.



COUNTESS OF LONSDALE

COUNTESS OF LONSDALE. The freest-flowing Cactus Dahlia in the collection, and perfect in form. Color, an exquisite shade of rich salmon, with just a suspicion of apricot at the base of the petals. Towards the tips the color deepens gradually to the softest carmine pink. (See cut).

Strong tubers 20c each; \$2.00 per doz.

EXQUISITE. Pure orange-scarlet. A superb form with long pointed petals. Produces a mass of flowers which are held well above the foliage.

Strong tubers 20c each; \$2.00 per doz.

Grand Junction, Colo.

"My Dahlias last season were a very gratifying success. In fact, were the finest I ever raised. Mrs. Winters was a beauty and produced some of the finest flowers I ever saw." D. T. STONE.

Cape May, N. J.

"I write to tell you of my very flattering success with the Dahlias I purchased of you. Since August the 1st they have been a blaze of color. Stock all grew and are among my finest varieties."

O. H. BROWN.



SIZE REDUCED THREE-FOURTHS.

DR. GATES. (1902)—This new cactus Dahlia is a lovely shade of sea shell pink shading to blush at the base of the petals. Unlike so many of the cactus varieties, this one has a fine stem, holding its flowers well above the foliage. Its flowers are very even in size and form. As a variety for cutting, it has no equal among the cactus types; a noble Dahlia.

Strong tubers, 20c each; \$2.00 per doz.

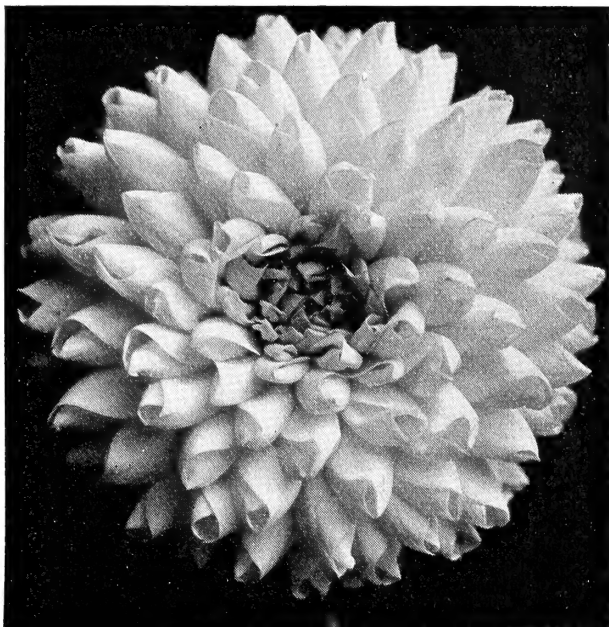
DR. MUIR. (1902)—Another new cactus Dahlia well worthy of a place in the front rank of any garden or catalogue. It originated with me the same year as the Dr. Gates, and from the same parent plant. A most remarkably free bloomer. Flowers are large and full, with petals curved and twisted, giving a fluffy effect to the flower. The plant is dwarfed and bushy in habit. Color, apricot, shaded to orange bronze.

Strong tubers 20c each; \$2.00 per doz.

IF IN DOUBT, SEND FOR BOTH DOCTORS.

GRAND DUKE ALEXIS. A magnificent Dahlia of the largest size. Its petals are beautifully quilled, giving it a very unique appearance. Its color is pure white, if slightly shaded, but overspread with delicate lavender when grown in bright sunlight. Undoubtedly one of the best of the show varieties.

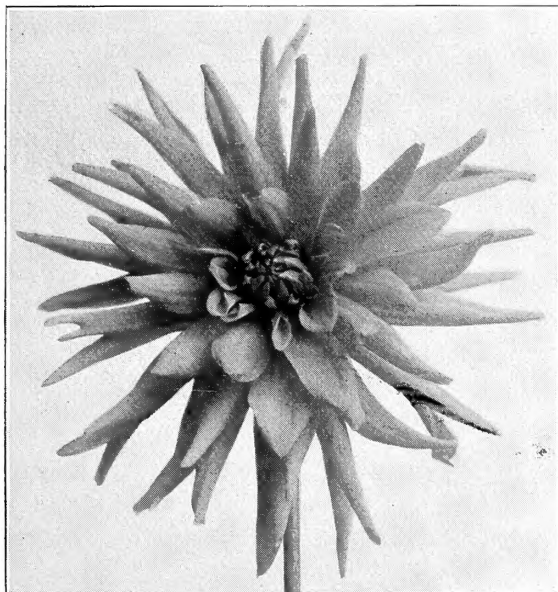
Strong tubers 20c each; \$2.00 per doz.



GRAND DUKE ALEXIS

INNOVATION. A fine Cactus with long wiry stems holding the flowers well away from the foliage. Petals are long and point forward. Base of petals bright red, shading white at the tip.

Strong roots, 20c each; \$2.00 per doz.



MRS. TURNER

MRS. CHAS. TURNER. This one is the finest of all the yellow in the Cactus variety. Extra large, with long, pointed petals and perfect in form. Bright lemon yellow.

Strong tubers, 20c each; \$2.00 per doz.

MRS. J. J. CROWE. Another superb Cactus; clear canary yellow, with long, finely cut petals; form very regular and stems long and erect.

Strong tubers, 25c each; \$2.50 per doz.

ZEPHYR. A light, feathery form of unique coloring; rosy pink shading to heliotrope. An early and profuse bloomer. One of the best.

Strong tubers, 20c each; \$2.00 per doz.

SPECIAL OFFER—One each of the foregoing 15 novelties post paid for \$4.00.

CACTUS AND DECORATIVE VARIETIES

Strong Tubers. Price, 15c each; \$1.50 per doz., postpaid.

| | |
|---|-----------------------|
| | Ft. High, Approximate |
| BLACK PRINCE. (Decorative). Very large. Dark velvety maroon | 4 |
| CINDERELLA. (Cactus). Petals long and pointed and quite regular in outline. Color, dark purple maroon. A very early and free bloomer | 3 |

| | |
|---|-----------------------|
| | Ft. High, Approximate |
| COUNTESS OF PEMBROKE. (Cactus). Soft lilac, shaded to lavender | 3 |
| DENVER. (Decorative). Pure yellow. Reverse of petals shaded orange bronze | 3 |
| EARL OF PEMBROKE. (Cactus). Deep purple maroon. Fine form | 3 |

W. W. WILMORE & DAHLIA SPECIALIST.

| | Ft. High, Approximate |
|--|-----------------------|
| GRAND MOGUL. (Decorative). Bright scarlet tipped and streaked pure white | 4 |
| GERMANIA NORVA. (Decorative). Color, bright pink; petals heavily serrated. (See light flower on trade mark) | 3 |
| GLORIOSA. (Cactus). Bright scarlet, long curved petals. One of the best | 4 |
| GERTRUDE. (Decorative). Pale lemon; good form and stem | 4 |
| GUISSLER. (Cactus). A small flower. Dark Crimson | 3 |
| HENRY PATRICK. (Decorative). Pure white. Flowers are very large and pure in color | 6 |
| HOHENZOLLERN. (Cactus). Clear orange.. | 4 |
| HARRY FREEMAN. (Decorative). Purest white. Excellent for cutting | 4 |
| JOHN ELITCH. (Decorative). One of the grandest of Dahlias. Deepest red. Very long stem | 6 |
| JENNIE PEARSE. A lovely yellow Cactus of medium size, petals long and regular, curving forward. Early and free | 3 |
| JOHN H. ROACH. (Cactus). Canary yellow, petals long and curved | 3 |
| KYNE'S WHITE. (Cactus). Pure white, petals long | 4 |
| KING OF CACTUS. (Decorative). A beautiful large red flower. Very long stem ... | 6 |
| LYNDHURST. (Decorative). Scarlet or vermilion. A noble flower | 4 |
| LUCILE. (Decorative). A remarkably free bloomer, so much so that the whole plant appears one mass of pure sulphur yellow.. | 3 |
| LADY PENZANCE. (Cactus). Purest yellow, fine form, stems short | 3 |
| MAID OF KENT. (Decorative). Intense scarlet, variegated with pure white; frequently a solid scarlet | 4 |
| MRS. HARTONG. (Decorative). Very large and exquisite form. Color, light fawn, suffused with pink. Very handsome | 5 |
| MRS. BENNETT. (Cactus). Soft crimson, large and well formed, petals broad and pointed. | 4 |
| MRS. BARNES. (Cactus). A beautiful primrose color. Flower well formed and a free bloomer. Stems rather short for cutting | 4 |
| MYRTLE. (Decorative). Very free flowering, of medium size. Color, vivid scarlet.. | 4 |
| MRS. PEART. (Cactus). One of the grandest of all Cactus Dahlias. Color, a delicate creamy white | 3 |
| MATCHLESS. Another grand Cactus Dahlia. Petals long and even. Dark maroon | 3 |
| MRS. TAIT. (Decorative). Pure white petals deeply serrated. Good | 4 |
| MRS. LINDER. This new decorative Dahlia I consider one of my best. Its color is a beautiful creamy white, shading to blush pink. Of perfect outline | 4 |
| NYMPHAEA. (Decorative). A pale pink flower of medium size. Very valuable for cutting purposes | 3 |
| OURAY. (Decorative). Deep blood red. Flower very large and rather loosely constructed. Stems very long | 4 |
| PRINCE OF ORANGE. (Cactus). A beautiful true Cactus form. In color a blending of apricot, orange and bronze. Very free.. | 3 |
| RAYON d'OR. (Decorative). Orange scarlet; sometimes marked with white | 4 |
| SULTANA. (Decorative). Orange red streaked with crimson | 3 |
| WM. PEARSE. (Decorative). Deep yellow .. | 3 |
| WM. AGNEW. (Decorative). Deep crimson. Flower very large. Good stem and form .. | 4 |
| YELLOW QUEEN. (Decorative). Soft pale yellow; sometimes marked with white .. | 3 |

SPECIAL OFFER—One each of the foregoing 38 Cactus and Decorative Dahlias for \$4.25, including express charges.

Weppinger Falls, N. Y.
 "The Dahlias received from you last year proved very satisfactory and valuable additions to my already large collection."
 Respectfully,
 G. H. HOWARTH.

San Francisco, Cal.
 "All the Dahlias I ordered, bloomed, and I am more than delighted with them. I think Mrs. Peart alone is worth more than I paid for the lot."
 E. L. MAY.

A FEW FACTS AND FANCIES

About the Dahlia

This interesting flower derives its name from Dr. Andrew Dahl, a noted Swedish botanist. The wild Dahlia is found in South America, and extends as far north as Mexico. There are but few species, but these have been propagated into a seemingly endless number of varieties of every hue. Just who should have the honor for first introducing the Dahlia as a domestic flower is a question upon which the authorities differ. But it is generally conceded that the first collection was sent to Madrid by Baron Humboldt, who was traveling in Mexico. They were first introduced into England in 1789 by the Marchioness of Bute, but they were grown in France and Spain several years prior to this. This collection, together with another received in 1804, was lost. Another lot was imported in 1815, and from this collection most of the Dahlias of the present time have been propagated. The flowers embrace all colors except blue. In their wild state they are single.

But to speak of the Dahlia of the present: It is wonderful to note the changes, not only in the Dahlia itself, but in the popular attention paid to it. Especially is this true of some of the new Cactus varieties, which, with their long twisted or pointed petals, remind one more of a Chrysanthemum than a Dahlia. But however popular this new type may be with some, it is plainly evident that it will not supplant the old show and fancy types. It, however, should be borne in mind that the Cactus-Dahlia is still new, and it is quite probable that many of the weaknesses of the type may yet be eradicated. The capricious habit of the Dahlia to sometimes freak, and sport, has given rise to some popular delusions concerning them, as, for instance, drawing color from other plants through the contact of the roots, and making variegated varieties by drawing various colored yarn threads through the roots, etc., all such beliefs are without foundation in fact. It must be admitted, however, that the laws governing these habits are but little understood.

CULTIVATION AND PROTECTION

(READ THIS BEFORE PLANTING)

While the Dahlia is one of the easiest of all flowers to cultivate, it by no means follows that it requires no attention. In fact, no flower that I have ever cultivated will give such a generous response to good cultivation as the Dahlia. Deep and thorough stirring of the soil during the early growth of the plant is indispensable to success. With poor cultivation or neglect the flower will rapidly degenerate—become semi-double and faded in color. The Dahlia, with but few exceptions, should be given an open, sunny situation for at least a portion of each day. It is a rank feeder and should be given rich soil and kept free from grass and weeds. Cultivation should cease when the blooms appear. After this a liberal supply of water in dry weather will be all they require. Plant the tubers two or three feet apart, according to the size and habit of the plant. The bulbs should be planted four inches below the surface of the ground, laying the tuber on its side. Varieties growing above three feet in height should be tied to stakes to prevent falling. Plant about the first of May in this latitude. As soon as the frost has killed the foliage, the roots should be carefully taken from the ground and the soil shaken from among them; they may be stored away in a cool place, not too dry, but secure from frost.

FLOWER AND VEGETABLE SEEDS

I do not keep these in stock, but will gladly procure them from local dealers and send them without extra cost to customers who may have need of them, under the guarantee of the dealer.

W. W. WILMORE, Dahlia Specialist.

SHOW AND FANCY VARIETIES

Strong Tubers. Price 15c each; \$1.50 per doz., postpaid.

Ft. High, Approximate

- ANNIE MOORE.** A fine variegated flower of medium size. Color, a beautiful combination of cherry, pink and white 3
- A. L. CHASE.** Creamy white, streaked with purple; sometimes solid purple 3
- A. D. LIVONI.** Rich pink. Finely formed. A very handsome flower 3
- AUSTRIAN.** Buff ground, shaded to reddish pink at top. Large and full 5
- ARABELLA.** A large, perfect form. Pale lemon, shading to primrose at the tips. Fine 3

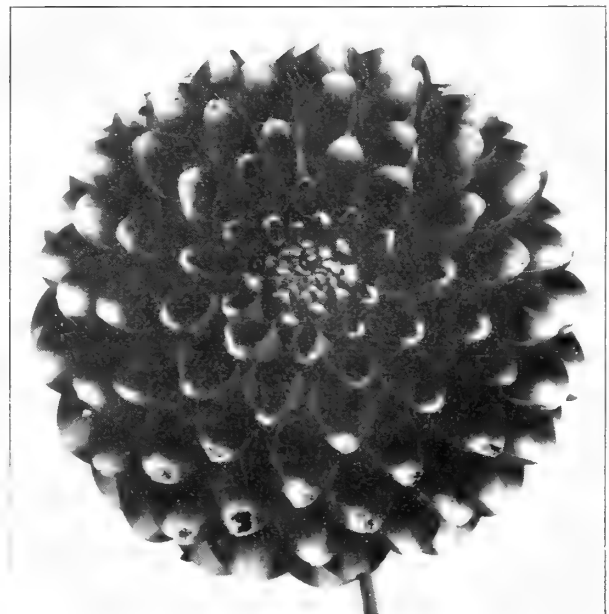


BON MAZA

- BON MAZA.** (Uncertainty). An old Dahlia, but one of the best. White ground, streaked and marbled in a curious manner with bright red 4
- BON TON.** A fine ball-shaped flower of a deep garnet red; sometimes tipped and streaked with white. An extra fine Dahlia 4
- CHIPETA.** A bold, dark red flower. Very large and full. Borne on long stems and flowering well above the foliage 4
- CRIMSON KING.** Deep crimson. Very constant in color. An early and free bloomer.. 3
- FLORAL PARK JEWEL.** Rich purple red, tipped and striped with white. Sometimes solid color. Very early and free 3

Ft. High, Approximate

- FAUST WOLFGANG.** Yellow Streaked crimson 3
- GEN. GRANT.** Orange streaked crimson .. 3
- GLORI DE LYON.** Pure white. The largest white Dahlia in cultivation; almost round as a ball 3
- GEN. CUSTER.** Deep purple maroon; long stems and a very free bloomer 4
- GOLDEN TREASURE.** A beautiful burnt orange color. Flower large, well formed and full to the center 3
- JOHN LAMONT.** Maroon, shaded black 3
- JOHN BENNETT.** Amber yellow, tipped cherry 3
- KATE HASLAM.** A beautiful, soft pink. Petals beautifully quilled 3



FRANK SMITH

- FRANK SMITH.** Rich dark maroon. Generally tipped with pure white, shaded into pink. One of the best 5
- IGNACIO.** A remarkably healthy, strong-growing plant, with long stems and large, full flowers. A deep, clear red 4
- JOHN FORBES.** Fawn color, striped maroon. Very large and free, possessing all the properties of a first-class flower 3

| | Ft. High, Approximate | | Ft. High, Approximate |
|---|-----------------------|---|-----------------------|
| KAISER WILHELM. One of the grandest flowers in cultivation. Of immense size and perfect form. Deep yellow, tipped and shaded with cherry red | 4 | PEARL. Of immense size, with long stem. Color, pale lavender, shaded to lilac | 3 |
| LYDIA DIETER. A beautiful soft lavender shade. One of the most attractive colors in the entire collection | 3 | PIONEER. The nearest approach to a black Dahlia of any yet introduced. For combined excellence it has no superior | 2½ |
| LONDON BEAUTY. Clear purple. Good form | 3 | PRINCE BISMARCK. Purple lake. A most pleasing color. Very fine form. One of the best | 3 |
| LADY MILDMAY. A very beautiful flower. White ground shaded to pale lilac. Very large and full. A free bloomer | 3 | PURPLE GEM. Rich royal purple, clear and constant. This variety is a decided improvement over the old varieties. A first-class flower. | |
| MISS DODD. Purest yellow. Of exquisite form and color. A remarkably handsome flower | 3 | PENELOPE. White ground shading to pale lavender | 3 |
| MISS BROWNING. Clear yellow, tipped with white. Very fine | 4 | QUEEN OF YORK. Crimson lake, full and fine | 4 |
| MRS. LANGTRY. Light buff, tipped with crimson | 3 | RED BIRD. Deep garnet red. Fine for cutting. | 3 |
| MISS RUTH. Lemon yellow, tipped with pure white; sometimes clear yellow | 3 | SNOWDRIFT. A well formed, pure white flower, with long stems | 3 |
| ORINE EMERSON. A very handsome flower, borne on long stems. Color, rich, dazzling red, shaded light cherry red | 3 | SNOW. A beautiful pure white, long stem. Excellent for cutting | 4 |
| ORANGE KING. Golden orange, shaded ochre. Stem long and good form | 5 | STORM KING. Purest white. Fine form. Early and free | 3 |
| PRINCESS MATHILDA. Pure white | 2½ | VERIDIFLORA. A natural curiosity. Its flowers are as green as the foliage, and are produced in profusion | 2½ |

SPECIAL OFFER—One each of the foregoing 43 Show and Fancy Dahlias for \$4.50, including express charges.

POMPON OR BOUQUET LIST

Price, 15c each; \$1.50 per doz., postpaid.

| | Ft. High, Approximate | | Ft. High, Approximate |
|--|-----------------------|---|-----------------------|
| ARIEL. Clear orange buff. Very free..... | 3 | FAIRY TALES. Delicate primrose. Very beautiful. | 3 |
| COCHINEAL ROSE. Deep Cochineal red, of perfect form | 3 | JOHN HARDEM. Brick red. Good form ... | 3 |
| CATHERINE. Bright yellow. Good form and stem | 3 | HEDWIG POLWIZ. Very free. Color, red and white | 3 |
| CAMELIAFLORA. Pure white. A perfectly formed flower of medium size | 3 | ISABEL. Vermilion. Very fine | 4 |
| COMET. Small ball-like flower, in color ranging from deep red to white | 3½ | LITTLE PRINCE. Quite small. Widely varied in color from deepest red to pinkish white | 3 |
| DARKNESS. Very dark maroon. Extra fine | 3 | LITTLE REX. Rosy pink. Long stems. Fine for cutting | 4 |
| ELI MILARD. Blush white. Quite small and well rounded. A prolific bloomer | 3 | LE PETIT BARBIER. Pure white. Very free | 3 |

| Ft. High, Approximate | Ft. High, Approximate |
|---|---|
| LURLINE. Lemon yellow. Shaded buff ... 3 | RED INDIAN. Deep coral red. Excellent . 3 |
| PURITY. Pure white. Well rounded and full. A prolific bloomer..... 3 | SCARLET GEM. Each part of the name is correctly descriptive 3 |
| PURE LOVE. Beautiful lilac 4 | WHITE ASTER. (GUIDING STAR). Pure white. Excellent for cutting. Petals fringed 4 |
| PAUL CHISHOLM. White shaded crimson. tipped buff; sometimes orange and crimson 4 | |

SPECIAL OFFER—One each of the 21 Pompons, including mail, \$2.25.

SECOND SPECIAL OFFER—For \$1.00 I will send a choice collection in 13 separate varieties, my choice from the foregoing lists, including red, scarlet, white, yellow, variegated, etc. All good varieties. Prepaid for \$1.00.

GLADIOLUS

Among the summer flowering bulbs the Gladiolus has but few, if any, equals. They are easily satisfied, both as to soil and location, doing equally well in beds, rows or interspersed among shrubbery. Good cultivation is desirable, but heavy fertilizing should be avoided.

Marked improvements have been made in recent years in all strains of Gladiolus. This is especially true of the Groff Gladiolus.

It gives it new forms, new colors and a more vigorous growth. In color the Gladiolus now ranges from purest white through the most delicate shadings of pink and yellow to the richest shades of red, purple and blue.

It is a common error to suppose that only large bulbs produce good spikes of bloom. In my experience the best of results may be obtained from bulbs no larger in circumference than a penny, and even smaller. For a succession of bloom I recommend planting bulbs of mixed sizes. In this way the season may be prolonged until late autumn.

The following two strains will be found very satisfactory, mixed colors giving a wide range of color.

| | |
|----------------------|--|
| Groff's strain | 1st size, 10c each; 75c per doz.; \$5.00 per 100 |
| Groff's strain | 2nd size, 5c each; 50c per doz.; 3.00 per 100 |
| Groff's strain | 3rd size, 3c each; 30c per doz.; 2.00 per 100 |

Wilmore's strain—Mixture made up from the finest of the older strains.

| | |
|----------------|------------------------------|
| 1st size | 40c per doz.; \$2.50 per 100 |
| 2nd size | 25c per doz.; 2.00 per 100 |

SPECIAL 1904 MIXTURE IN PACKAGES OF 50 FOR 75c.

A fancy mixture of either of the above strains that will produce one good spike of bloom from each bulb—my favorite planting size. Try one of these packages.

TUBEROSE

Too well known to require a description. Plant in very rich soil and keep moist. If planted early it will bloom well out of doors.

Price, 5c each; 40c per doz.

Ogden, Utah.
 "Your Dahlia, Mrs. Winters, is the best white I have yet seen."
SAMUEL CULLY,
 Dahlia Specialist.

Santa Fe, N. M.
 "The plants received from you proved so satisfactory I have been glad to recommend you to my friends."
DR. W. S. HARROUN.

PÆONIES

Fine, hardy plants, rivaling the rose in perfection of bloom, color and fragrance. They are at home in any climate or soil, but thrive best in a deep, rich, well-drained loam. They make a gorgeous display planted in beds, on the lawn, or planted singly along a walk or herbaceous border. The paeony is perfectly hardy and generally able to care for itself, but it does not follow that they enjoy neglect. Give them ample room in which to grow, keeping them free from weeds and grass and they will amply repay all the care given. A word to beginners. Don't be alarmed when you see your newly set paeonies begin to turn brown in July and appear to be quite dead by August. This is natural and they will be on hand again in the spring.

The following varieties embrace a wide range of color and will be found very satisfactory. Prices, except where noted, 25c each; \$2.50 per doz.

ALBIFLORA. A grand old Paeony. Pure white. Very large and fragrant.

EARLY ROSE. An early pink variety. Blooms right after the Old Red; the flowers are large and in clusters.

DUKE OF WELLINGTON. Ivory white with creamy white center. Very large.

FESTIVA MAXIMA. A rare variety of great beauty. Exceedingly showy and of large size. Flowers perfectly double; pure, snowy white-tipped or flaked with small crimson spots at center. Petals fine as summer silk. Finest white in cultivation. Each 50c; \$5.00 per doz.

HUMEL. A pink Paeony. Very full and double. Very large and showy; one of the latest in

bloom. It wants to be mulched heavily in order to bring its flowers into perfection.

POTTSI. Dark purple red. Very long stem. Medium quality.

GOLDEN CENTRE. This is not a large Paeony, but is a very good one. Pure white, pale yellow center.

LATE ROSE. Similar to Early Rose, only it blooms later in the season. It is a fine rose-scented flower.

LADY LENORA BRAMWELL. Very large and sweet. Silver rose.

OFFICINALIS RUBRA. (Old Red). Flowers of a bright scarlet crimson, quite double and globular. Very early, rare and fine.

ROSEA SUPERBA. Fine, full rosy pink. Extra choice flower. Very free bloomer.

HARDY HERBACEOUS PERENNIAL PLANTS

For Permanent Planting in Garden, Borders, Cemetery Plots, etc.

STRONG FIELD GROWN PLANTS.

No flower garden is complete without a collection of these most valuable plants. With a little care they may be selected so as to give a continuous supply of flowers from early spring to autumn's frosts. They require far less care than the annuals or bedding plants, and may be used to good advantage to fill odd corners, along fences, and to screen unsightly objects. They are perfectly hardy, and yet for winter they should have a slight covering of leaves or other litter. Care should also be taken to prevent pools of water standing on them during winter. I will gladly make selections for those not familiar with hardy plants if they will inform me as to space to be filled. In this way I can send thirteen distinct varieties, postpaid, for \$1.00.

ACHILLEA.

(Milfoil, or Yarrow).

"THE PEARL." Flowers borne in the greatest profusion the entire summer on strong, erect stems, two feet high, of the purest white; as a summer cut-bloom it is of great value.

Price, 10c each; \$1.00 per doz.

BOLTONIA ASTEROIDES.

(False Camomile).

Aster-like flowers, pure white and very showy. Grows to a height of four and five feet. One of the best hardy perennials.

Price, 10c each; \$1.00 per doz.

BLEEDING HEART.

(Dielytra Spectabilis).

A hardy perennial plant producing graceful sprays of heart-shaped pink and white flowers.

Price, 25c each; \$2.50 per doz.

COREOPSIS LANCEOLATA.

A beautiful, hardy border plant. Grows fifteen to eighteen inches high, and produces its bright golden-yellow flowers in great profusion the entire season. It makes a handsome vase flower when cut, and should be grown in quantity whenever flowers are wanted for table decoration.

Price, 10c each; \$1.00 per doz.

COLUMBINE.

(Aquilegia).

CAERULEA. The beautiful native species of the Rocky Mountains. Very broad flowers, three inches or more in diameter. The outer sepals and long spurs are deep blue. Center of flower creamy white. Grand for cutting or border work.

Price 20c each; \$2.00 per doz.

CHRYSANTHA. (Golden Spurred Columbine). Grows two and half feet high, forming a bush two to three feet across, which is covered for two months with golden yellow flowers with long spurs. One of the most distinct of the family.

Single, 10c each; \$1.00 per doz.

CAMPANULA.

GRANDIFLORA. A fine, erect growing plant, producing a profusion of pure white flowers during July and August. Grows from two to two and one-half feet high. Fine for cutting.

Price, 10c each; \$1.00 per doz.

CARPATICA. A very pretty dwarf Campanula. Grows only one foot in height and produces a profusion of blue bell-shaped flowers. Fine for rock or border work.

Price, 10c each; \$1.00 per doz.

GEUM.

(Avens).

Pretty border plants, growing about eighteen inches high and producing showy, bright-colored flowers during the greater part of the summer and fall. Semi-double dark crimson flowers.

Price, 10c each; \$1.00 per doz.

GOLDEN GLOW.

(Double Rudbeckia).

This is decidedly one of the brightest and most showy among the hardy plants and of the easiest culture possible. The plant is compact, growing six to eight feet high, producing numerous stems which are laden with double golden-yellow flowers, in size and general appearance resembling a Cactus Dahlia. Excellent for cut flowers. Should find a place in every garden.

Price, 10c each; \$1 per doz.; 6 to 8 feet.

GYPSOPHILA PANICULATA.

(Baby's Breath).

A beautiful perennial, possessing a grace not found in any other perennial, and attracting the eye of everyone. When in bloom it forms a symmetrical mass two to three feet in height, of minute pure white flowers, forming a beautiful gauze-like appearance. For cutting purposes it is exquisite, especially in combination with high colored flowers, and some most lovely effects can be produced with it.

Price, 10c each; \$1.00 per doz.

GAILLARDIA.

(Grandiflora).

Beginning to flower in June, they continue one mass of bloom the entire summer. Flowers three inches in diameter, center dark reddish-brown, petals vary from scarlet-orange to crimson.

Price, 10c each; \$1.00 per doz.

HARDY ASTERS.

(Michaelmas Daisies, or Star-worts).

These are among the showiest of our late-flowering hardy plants, giving a wealth of bloom at a season when most other hardy flowers are past. I offer two colors only—blue and white.

Price, 10c each; \$1.00 per doz.

HARDY MARGUERITE.

A well known hardy daisy, growing about two feet high. Flowers pure white with bright yellow center.

Price 10c each; \$1.00 per doz.

HELIANTHUS.**(Hardy Sunflowers).**

Multiflorus Maximus. A gigantic single variety, growing from five to six feet high, producing immense single golden-yellow flowers.

Price, 10c each; \$1.00 per doz.

HIBISCUS.**(Crimson Eye).**

An immense white flower with a crimson eye. Perfectly hardy. Blooms freely from mid-summer until killed by frost.

Price, 10c each; \$1.00 per doz.

HARDY PERENNIAL PINKS.

This old-time favorite is well deserving of a place in every garden. They occupy but little space, and yet produce a profusion of richly hued flowers of delightful fragrance.

Mixed colors, 10c each; \$1.00 per doz.

HEMEROCALLIS (FLAVA).**(Lemon Lily).**

A most useful variety, growing about two feet high, with clusters of lily-like flowers of a rich yellow; 2 feet.

Price, 10c each; \$1.00 per doz.

Kwanso. A double-flowering form and a most desirable herbaceous plant, that deserves being planted very largely. Large orange-colored flowers shaded copper. Blooms during July and August; two feet.

Price, 10c each; \$1.00 per doz.

HOLLYHOCKS.**(Double Strong Field Roots).**

As a background in large borders or beds of the lower growing herbaceous plants there is nothing better. For planting in rows or groups on the lawn, or interspersing among shrubbery they are invaluable. The flowers, which are as elegant in shape as a Camelia, form perfect rosettes of the most lovely shades. Separate colors in red, white, yellow, pink and maroon.

Price, 10c each; \$1.00 per doz.

HOLLYHOCKS.**(Mammoth Double-Fringed "Aleghany").**

An entirely new departure, which has much to commend it. The mammoth flowers are wonderfully formed of loosely arranged fringed petals, which look as if made from the finest China silk.

Mixed colors, only 10c each; \$1.00 per doz.

HELENIUM.**(Sneeze-wort).**

A fine late blooming plant, producing flowers of various colors of yellow and bronze,

with brown center. Continues in bloom after severe frost. Grows to a height of three feet.

Price, 10c each; \$1.00 per doz.

IRIS (Germanica).

Large flowering varieties in blue, bronze, lavender, pink, yellow and creamy white.

Separate colors 10c each; \$1.00 per doz.

LYCHNIS (Lamp Flower).

A hardy perennial, growing to the height of two and one-half to three feet, and producing fine heads of bright scarlet flowers.

Price, 10c each; \$1.00 per doz.

LILIES.**TIGRINUM. (Tiger Lily).**

Price 10c each; \$1.00 per doz.

FLORE PLENO. (Double Tiger Lily).

Price, 10c each; \$1.00 per doz.

For list of Paeonies see page 12

ORIENTAL POPPY.

This poppy is perfectly hardy. Its large orange-scarlet flowers make it one of the most showy of all plants.

Price, 10c each; \$1.00 per doz.

PHLOX (Perennial).

Too much could scarcely be said in praise of this, perhaps the most showy of all the hardy perennials. It is of the easiest culture, and a good selection of colors once planted will continue to produce a wealth of flowers for many years without further care. I carry the following distinct colors: Red, white, purple, lavender, deep lilac, pale pink with red eye, pure white with pink eye, salmon scarlet, salmon pink.

Price, 10c each; \$1.00 per doz.

Set of nine varieties for 75c.

PENTSTEMON.**(Beard-tongue).**

GENTIANOIDES. Produces large, pyramidal spikes of Gloxinia-like flowers from early in August until late in fall, ranging in color from creamy white to the deepest crimson. I offer choice mixed seedlings; 1½ to 2 feet high. They require protection in winter.

Price, 10c each; \$1.00 per doz.

PYRETHRUM.

A very pretty and useful class of plants giving a profusion of bloom in June and at intervals during the summer and fall. Its range of color is wide, but is especially rich in reds, purples and scarlets. Thrives well in any soil and lasts a long time after being cut.

Mixed colors, 10c each; \$1.00 per doz.

PARDANTHUS.

(Blackberry Lily).

SINENSIS. Lily-like flowers of a bright orange color during July and August, on 2½ feet stems, which are followed in September with seeds which resemble blackberries.

Price, 10c each; \$1.00 per doz.

PLATYCODON GRANDIFLORA.

(Chinese Bell Flower).

Blooms freely from July to September. Flowers are bell-shaped and dark blue in color, quite hardy.

Price, 10c each; \$1.00 per doz.

SWEET WILLIAM.

Too well known to require description. A general favorite with all. Mixed colors, only strong plants.

Price, 10c each; \$1.00 per doz.

SHASTA DAISY.

A mammoth new daisy producing pure white

flowers with bright yellow center. Flowers freely on long stems. Excellent for cutting. Perfectly hardy.

Price 15c each; \$1.50 per doz.

SPIREA FILIPENDULA.

(Double Drop Wert).

A very hardy herbaceous plant, with fern-like foliage, throwing up numerous flower stems, literally covered with miniature double white flowers. Very graceful.

Price, 15c each; \$1.50 per doz.

TRITOMA.

(Flame Flower, Torch Lily, or Red-hot Poker).

PFITZERII. The freest flowering variety in cultivation, with heads of bloom over twelve inches long of a rich orange-scarlet, shading to salmon-rose at edges, producing a grand effect whether planted singly in the border or in masses or beds.

Price, 25c each; \$2.50 per doz.

HARDY SHRUBS AND VINES

NOTICE.—Articles in this department not marked * are intended for local trade, as they are too large for mailing. If ordered by express, purchaser pays the express charges. Articles marked * may be sent through the mail without extra cost.

Hardy Climbing Plants

***AMPELOPSIS VEITCHI.**

The popular Boston or Japan Ivy, which clings firmly to any wall, tree, etc. The leaves, which at first are of an olive-green brown color, change to bright scarlet in the autumn. This variety becomes more popular every season, and is without question one of the very best climbing plants for covering brick, stone or wooden walls that can be grown.

Strong plants, 25c each.

***CLEMATIS JACKMANI.**

This variety, with its strong, healthy growth, hardy nature and rich, deep velvety-purple flowers, is the most satisfactory of its class. Blooms with astonishing profusion from July to November on shoots of the present season. Should be pruned early in spring.

Price, 75c each.

***CLEMATIS PANICULATA.**

A vine of very rapid growth, quickly cover-

ing trellises and arbors with handsome, clean, glossy green foliage. Flowers are of medium size, pure white, borne in immense sheets and of a most delicious and penetrating fragrance. The flowers appear in September, at a season when few other vines are in bloom. The extreme rapidity of growth, the showy foliage, beautiful and fragrant flowers and hardihood serve to make this one of the very choicest of recent introductions.

Price, 20c each; \$2.00 per doz.

HONEYSUCKLES.

***HALLEANA.** A vigorous grower. Flowers yellowish-white; exceedingly fragrant and freely produced.

Price, 25c each.

***WISTARIA.**

A very rapid climber, producing long sprays of purple flowers.

Two-year-old roots, 25c; one-year-old, 15c.

***DEUTZIA (Lemoinei).**

New. Its flowers are produced in broad-based cone-shaped heads of from twenty to thirty flowers each, and are of the purest white. Price, 25c each.

HYDRANGEA PANICULATA.

This is the finest hardy shrub in cultivation. The flowers, which are borne in dense pyramidal panicles in the greatest profusion, are white when they first open, but gradually change to rose color and remain in good condition for weeks.

Two-year-old, 35c.

LILACS.

Named varieties. Double Flowering.

ALPHONSE LAVALLEE. Blue, shaded violet.

BELLE DE NANCY. Light rosy purple.

JEAN BART. Rosy carmine.

LA TOUR AUVERGNE. Violet purple.

MAD. JULES FINGER. Satiny rose.

The above are in tree form, three feet high.

Price, 60c each; the set of five for \$2.50.

COMMON PURPLE.

*Price, 1 year old, 15c.

Price, 2 years old, 25c.

Price, 3 years old, 50c.

COMMON WHITE.

*Price, 1 year old, 25c.

Price, 2 years old, 35c.

Price, 3 years old, 50c.

SNOWBALL.

Too well known to require description.

Two years old, 50c each.

One year old, mailing size, 25c each.

TARTARIAN HONEYSUCKLE (Red).

An erect symmetrical shrub, with glossy leaves, producing a profusion of star-shaped pink flowers, very hardy.

Two years old, 50c.

SPIREA VON HOUTTE.

(Bridal Wreath).

The grandest of all the spireas. It is a beautiful ornament for the lawn at any season, but when in flower it is a complete fountain of white bloom, the foliage hardly showing.

Three years old, 75c; 2 years old, 50c.

*1 year old, 25c.

*** SPIREA ANTHONY WATERER.**

This spirea makes a dwarf, compact bush, fifteen to eighteen inches high, and is covered the entire growing season with large umbels of deep crimson flowers. It is perfectly hardy, an excellent plant for low clumps or beds.

Price, 25c each.

SYRINGA OR MOCK ORANGE.

Vigorous growing, hardy shrubs, with fine pure white flowers and bright, handsome foliage. Should be more generally planted. Very sweet.

Price, *one year old, 25c; two year old, 50c.

HARDY ROSES

TWO YEARS OLD, FIELD GROWN, 35C EACH

EXCEPT WHERE NOTED.

ALFRED COLOMBS. Bright cherry red.

BARONESS ROTHSCHILD. A superb rose of rich satiny-pink.

COQUETTE DES ALPS. Pure white. Very free.

GEN. JACQUEMINOT. Velvety crimson.

MRS. JOHN LAING. Bright pink.

PAUL NEYRON. Rosy pink. Very large.

PRINCE CAMILLE DE ROHAN. Dark velvety-crimson.

THREE GOOD CLIMBERS.

CRIMSON RAMBLER. Undoubtedly the most popular of all climbers. Perfectly hardy, rapid of growth, and immensely productive.

Price, 50c each.

PRAIRIE QUEEN. Deep rose, hardy and desirable.

SEVEN SISTERS. Light rose. Blooms in clusters.

NOTE—All of the above are hardy here, but should have slight protection for winter.